

**THE CORPORATION OF THE
Township of
Edwardsburgh/Cardinal**

**Tender for the Jordan Road Culvert Replacement
Tender No. EC-PW-24-06**

SEALED TENDERS, on the forms supplied with in the Tender Documents, will be received at the Municipal Office Located Spencerville, 18 Centre Street, Spencerville ON, K0E 1X0 UNTIL

Tuesday April 9th, 2024 @ 2:00 pm

In general, the work includes the installation of 3 1800mm CSP culverts.

Major Items Include but Are Not Limited to The Following: 1800 CSP – 46m

Electronic Contract specifications and tender forms may be obtained by emailing the Greer Galloway at kingston@greergalloway.com. **Documents will be available Tuesday, March 12, 2024**

All inquiries related to the Tender Documents should be directed via email no later than **Thursday, April 4th, 2024, at 2:00pm** to: kingston@greergalloway.com

Tender documents will be available, for viewing only, at the Township Municipal Office as well as the Greer Galloway office in Kingston.

The tender must be accompanied by an Agreement to Bond or a letter from a financial institution agreeing to supply a letter of credit. Tenders must also include a tender deposit in the form of a Certified Cheque or Bid Bond made payable to the **Township of Edwardsburgh/Cardinal**, in an amount not less than that specified in the Tender Documents.

TENDERS will be opened publicly at the Municipal Office located on 18 Centre Street, in the Town of Spencerville ON. K0E 1X0.

The lowest or any tender will not necessarily be accepted.

Dave Grant, CAO
Township of Edwardsburgh/Cardinal

18 Centre Street
Spencerville, ON
K0E 1X0
T: (613) 658-3055
F: (613) 658-3445
Dsgrant@twpec.ca

Mr. Kevin Hawley, P. Eng., Project Manager
The Greer Galloway Group Inc.
Consulting Engineers

640 Cataraqui Drive, Unit 2A
Kingston, ON
K7P 2Y5
T: (613) 536-5420
F: (613) 548-3793
Khawley@greergalloway.com

JORDAN ROAD CULVERT REPLACEMENT

TOWNSHIP OF EDWARDSBURGH CARDINAL, ON

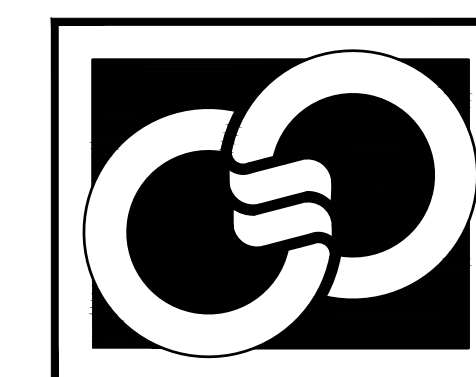


APPROXIMATE STRUCTURE LOCATION

LIST OF DRAWINGS

C0	COVER
C1	PLAN & PROFILE
D1	DETAILS

THE GREER GALLOWAY GROUP INC.
CONSULTING ENGINEERS



PETERBOROUGH
BELLEVILLE
KINGSTON

640 CATARAQUI WOODS DRIVE, UNIT 2A
KINGSTON, ONTARIO K7P 2Y5
PHONE: (613) 536-5420

CAD FILE: P:\Kingston Project\5000 - Municipal\2355392 - Jordan Road Culvert Replacement\Drawings\Jordan Road Culvert Replacement - 17.11.2023 - ISSUED FOR 100% REVIEW.dwg
 DATE PLOTTED: DD/MM/YYYY
 PLOT SCALE: AS NOTED
 GGG-A1

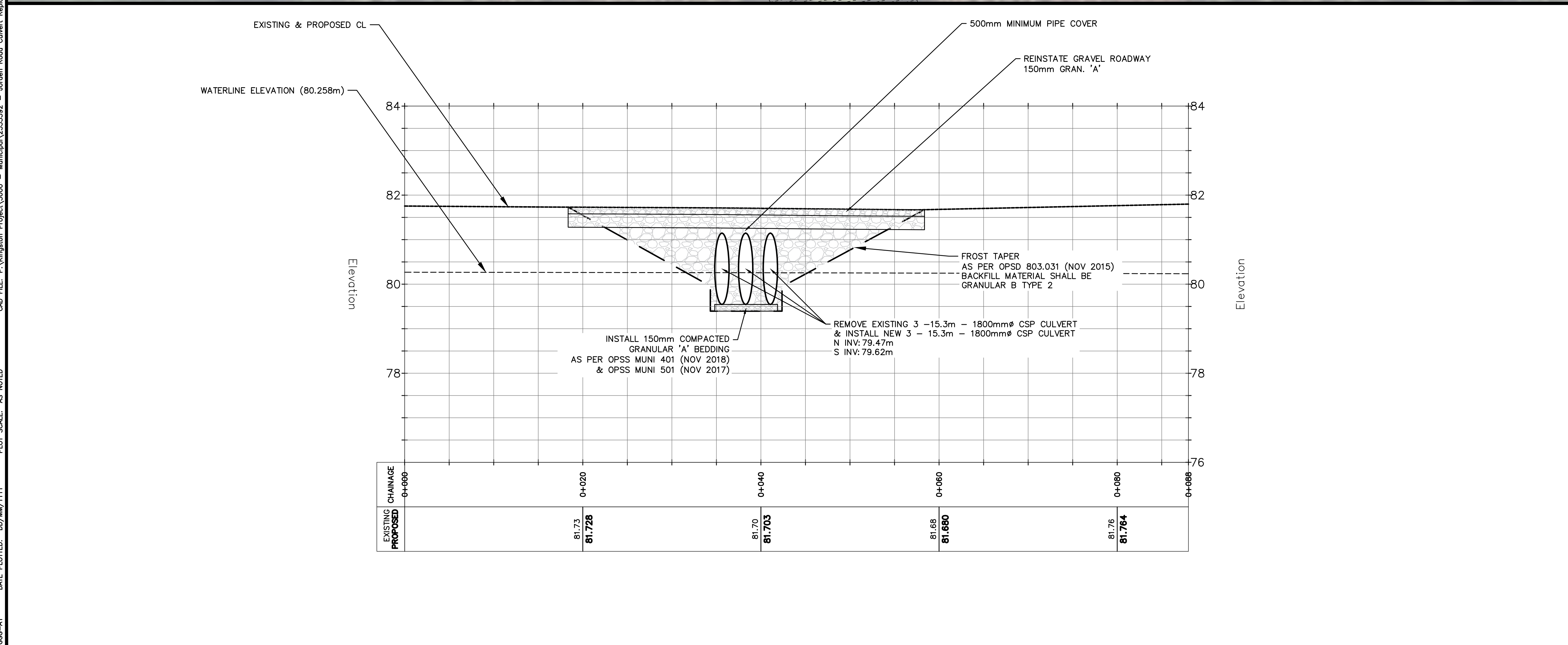
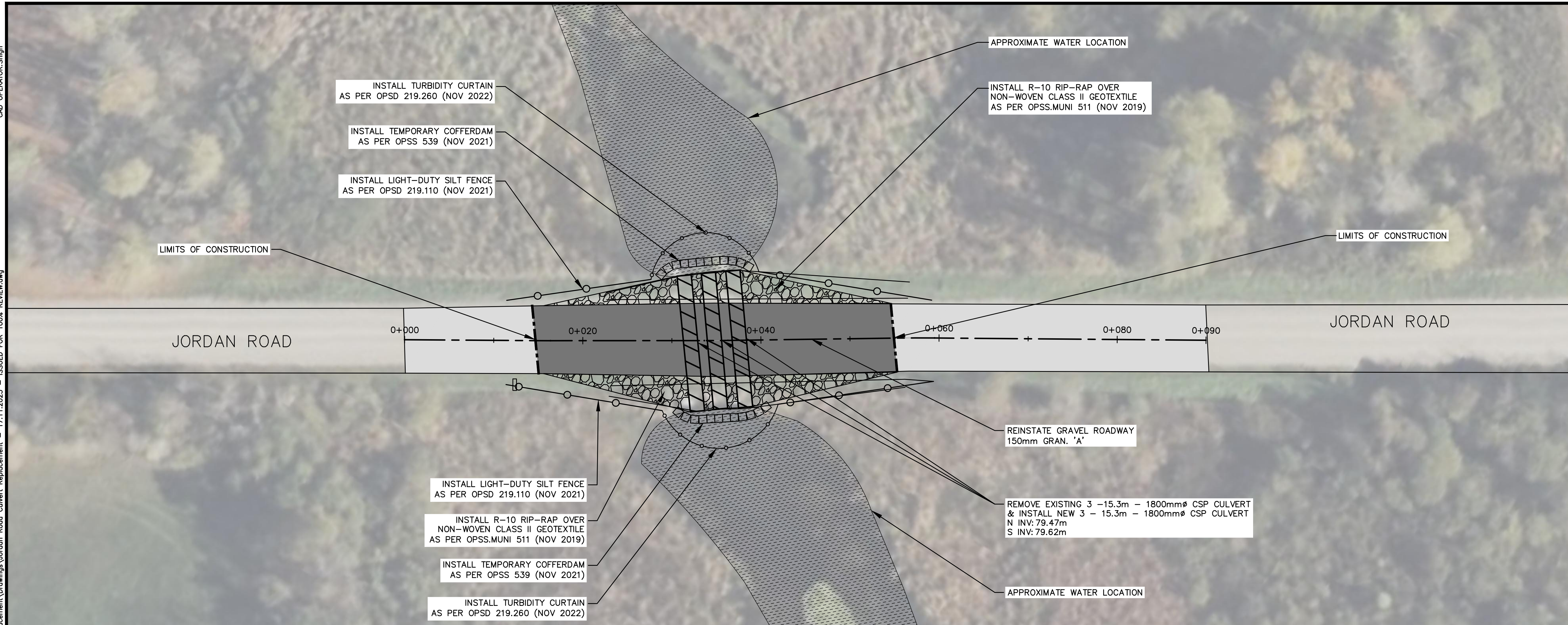
THE GREER GALLOWAY GROUP INC.
 CONSULTING ENGINEERS
 PETERBOROUGH
 BELLEVILLE
 KINGSTON
 640 CATARAQUI WOODS DRIVE #2A
 KINGSTON, ONTARIO, K7P 2Y5
 PHONE: 613-536-5420
 FAX: 613-548-3793

NOTES:
 1. ALL WORK SHALL BE IN ACCORDANCE WITH RELEVANT CODES AND GUIDELINES.
 2. ALL DRAWINGS AND ADDENDA ARE TO BE READ AS, AND IN CONJUNCTION WITH THE SPECIFICATIONS.
 3. ALL EQUIPMENT SHALL BE INSTALLED AS SPECIFIED OR APPROVED EQUIVALENT.
 4. CONTRACTOR MUST CHECK AND VERIFY ALL DIMENSIONS BEFORE PROCEEDING WITH WORK AND BE RESPONSIBLE FOR SAME.
 5. CONTRACTOR MUST REPORT ANY DISCREPANCIES TO ENGINEER FOR RESOLUTION BEFORE COMMENCING THE WORK.
 6. ANY CHANGES MUST BE APPROVED BY THE ENGINEER.

A A DETAIL NO.
 B B DRAWING NO. - WHERE DETAILED

LEGEND

ROADWAY	
CULVERT	
WATER	
RIP RAP	
TREE LINE	
SILT FENCE	
TURBIDITY CURTAIN	
CONSTRUCTION LIMITS	



NORTH STAMP

 APR. 21/21

PROJECT
 JORDAN ROAD
 CULVERT REPLACEMENT
 EDWARDSBURGH CARDINAL, ON

DRAWING TITLE
 PLAN & PROFILE

REVISION	ISSUED FOR 100% REVIEW	DATE
05		
04		
03		
02		
01	ISSUED FOR 100% REVIEW	17/11/23

DESIGNED BY
 G. HOEGI

DRAWN BY
 S. HIGH

REVIEWED BY
 K. HAWLEY

APPROVED BY
 K. HAWLEY

PROJECT DATE
 25/09/2023 (DD/MM/YYYY)

PROJECT #
 23-5-5392

DRAWING #
 C1

SCALE
 HOR: 1:250
 VER: 1:50

(METRIC SCALE - ALL DIMS IN METERS UNLESS OTHERWISE SPECIFIED)

CAD OPERATOR: Shih
CAD FILE: P:\Kingston Project\5000 - Municipal\2355392 - Jordan Road Culvert Replacement\Drawings\Jordan Road Culvert Replacement - 17.11.2023 - ISSUED FOR 100% REVIEW.dwg
DATE PLOTTED: DD/MM/YYYY
PLOT SCALE: AS NOTED
GCG-A1

GENERAL

- All works to be installed in accordance with current Township of Edwardsburgh Cardinal Guidelines, Ontario Building Code and, Ontario Provincial Standard Specifications and Drawings unless specified otherwise.
- Prior to construction, Contractor to verify all dimensions, sewer inverts and utility locates and identify possible conflicts.
- All environmental protection measures are the responsibility of the contractor.
- Any traffic signs or information signs removed/damaged during construction are to be replaced at the contractors costs.
- All utility poles to be braced as necessary.
- The location of utilities is approximate only, and the exact location should be determined by consulting the municipal authorities and utility companies concerned. The contractor shall prove the location of utilities and shall be responsible for adequate protection from damage during construction.

TRAFFIC CONTROL

- All traffic control/pedestrian signing as per OTM.

GRADING

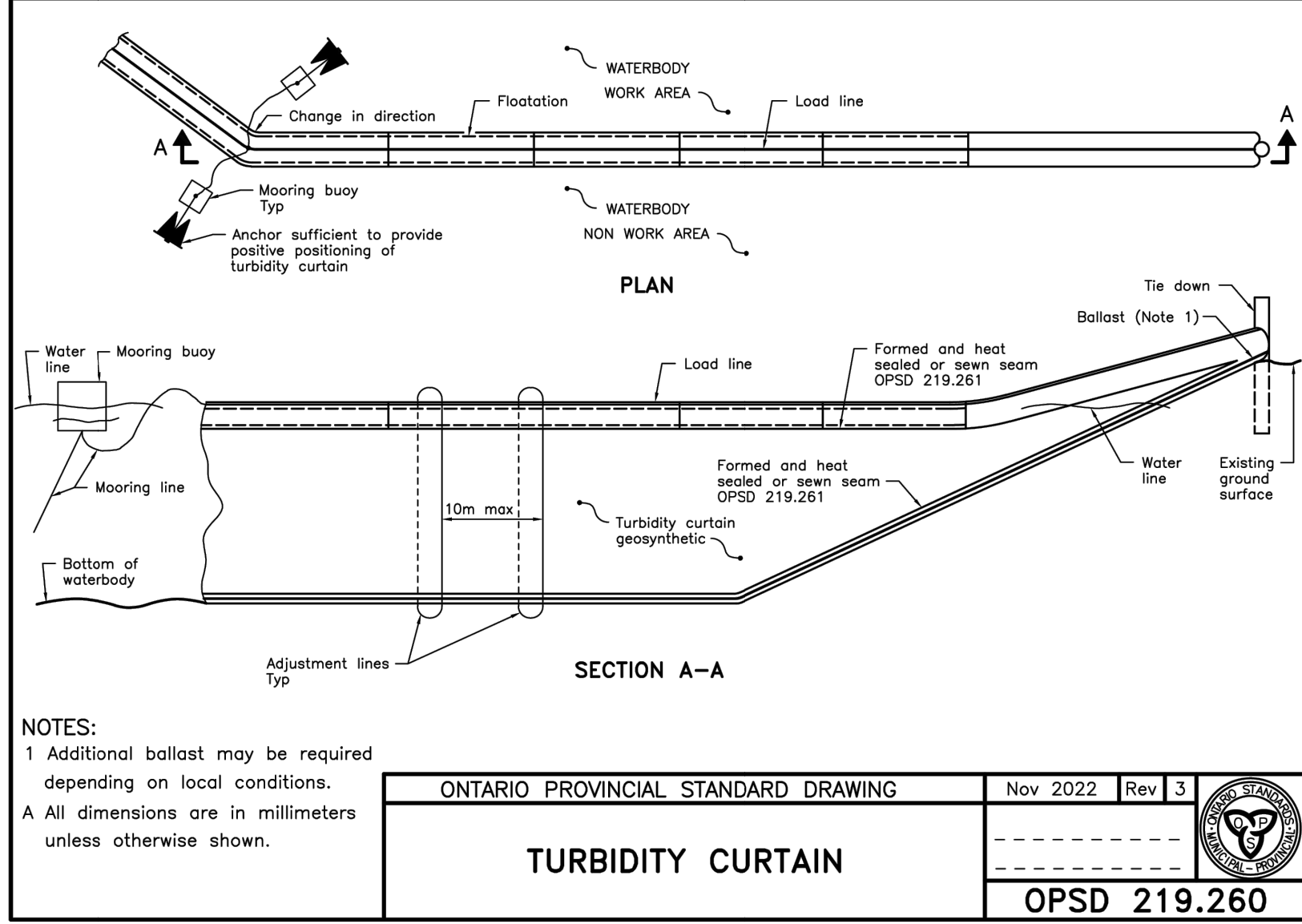
- Finished surfaces shall be at a minimum grade of 2% unless otherwise noted.
- Slopes in landscaped areas shall not exceed 2:1.
- All existing elevations and grades are to be verified by the contractor prior to grading
- Utilities are to be located prior to construction
- All ground surfaces shall be graded to prevent ponding and without low areas except where approved swale or catchbasin outlets are provided.
- The contractor is responsible for reviewing proposed grades with conflicts regarding the proposed structures.
- Sub-grade shall be graded at a minimum of 3%, until a lower ditch is encountered an existing surface that has positive drainage away from the roadway.

SITE WORKS

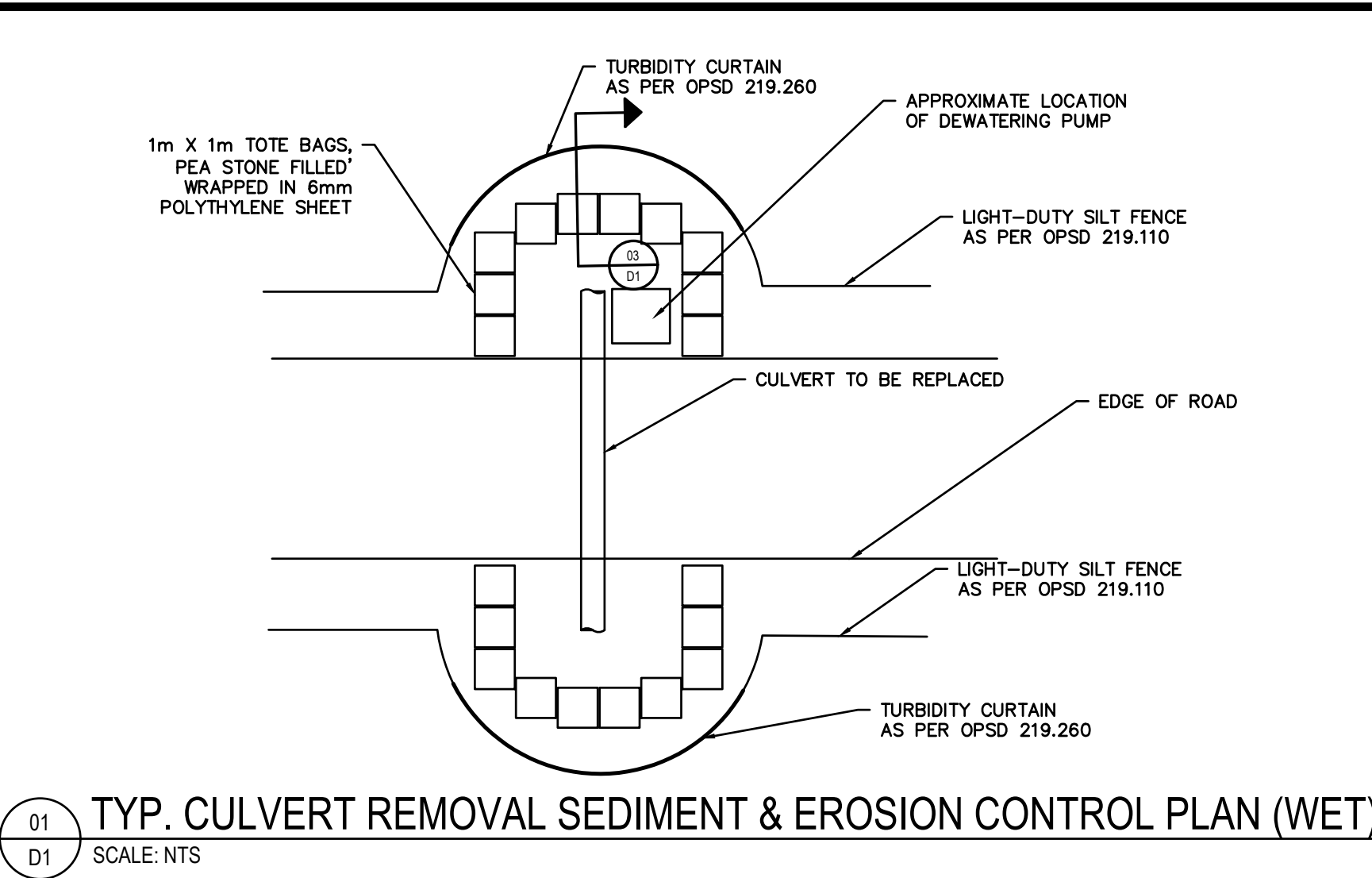
- Where in earth subgrade compacted granular depths to be 150 mm Granular A and 350mm Granular B. Provide 3% crossfall on subgrade.
- All disturbed areas to be remediated with 100 mm topsoil and seed as per OPSS 802 & OPSS 804.

SEDIMENT AND EROSION CONTROL NOTES

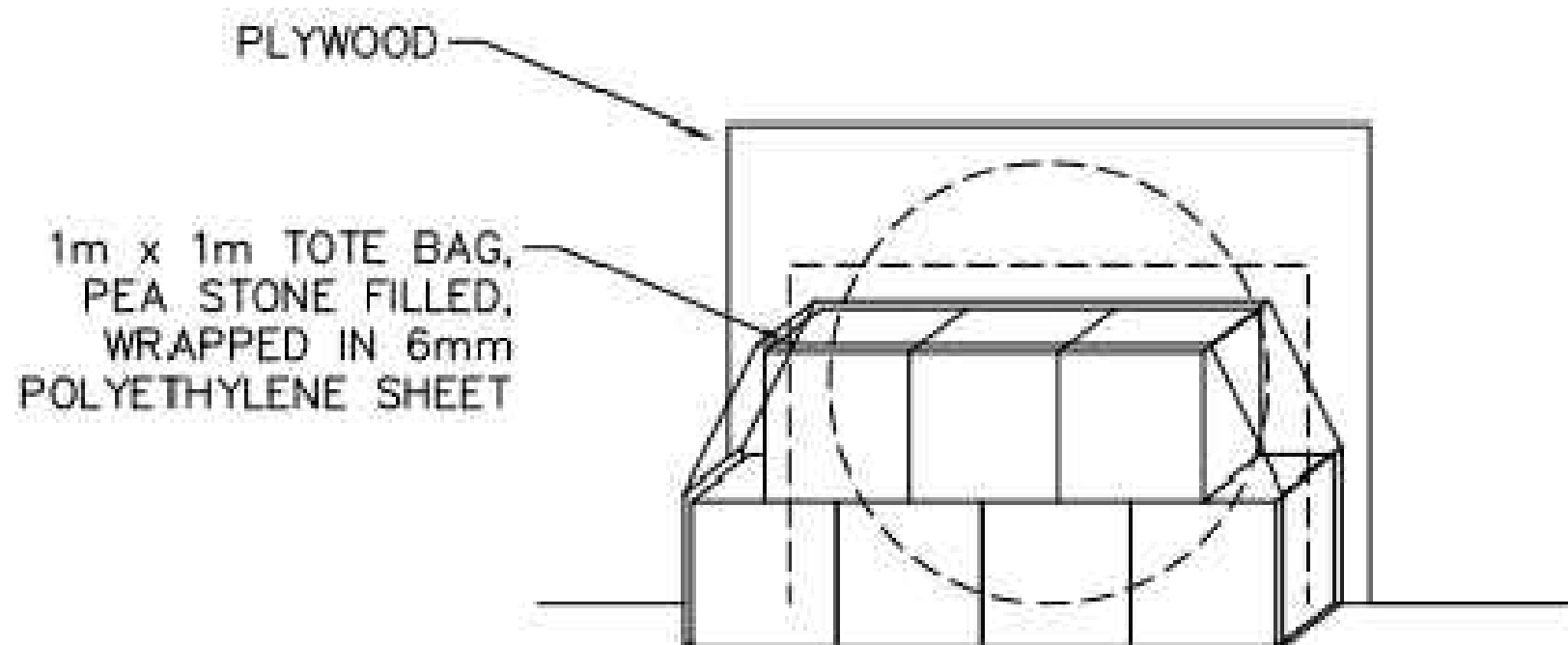
- All erosion and sediment controls shall be installed prior to construction and monitored and maintained by the Contractor throughout the construction process, until all disturbed areas have been re-vegetated then the temporary sediment and erosion control measures must be removed once the site has been stabilized/completed of site works.
- All erosion and sediment control measures shall be inspected after prior to and after each rainfall to the satisfaction of the Contract Administrator.
- Any disturbed areas not scheduled for further construction within forty-five (45) days will be provided with a suitable temporary mulch and seed cover within seven (7) days of completion.
- Regardless of site specific items detailed on the plans, the Contractor shall install erosion control measures to suit the proposed work methods to control sediment from running off the site prior to any disturbance.
- Following construction, disturbed areas, as well as proposed grassed and vegetated surfaces, shall be reinstated as soon as practical.
- All roads used to access the site shall be kept clean to the satisfaction of the Director of Public Works
- No in water work will be conducted between March 15 - July 15.



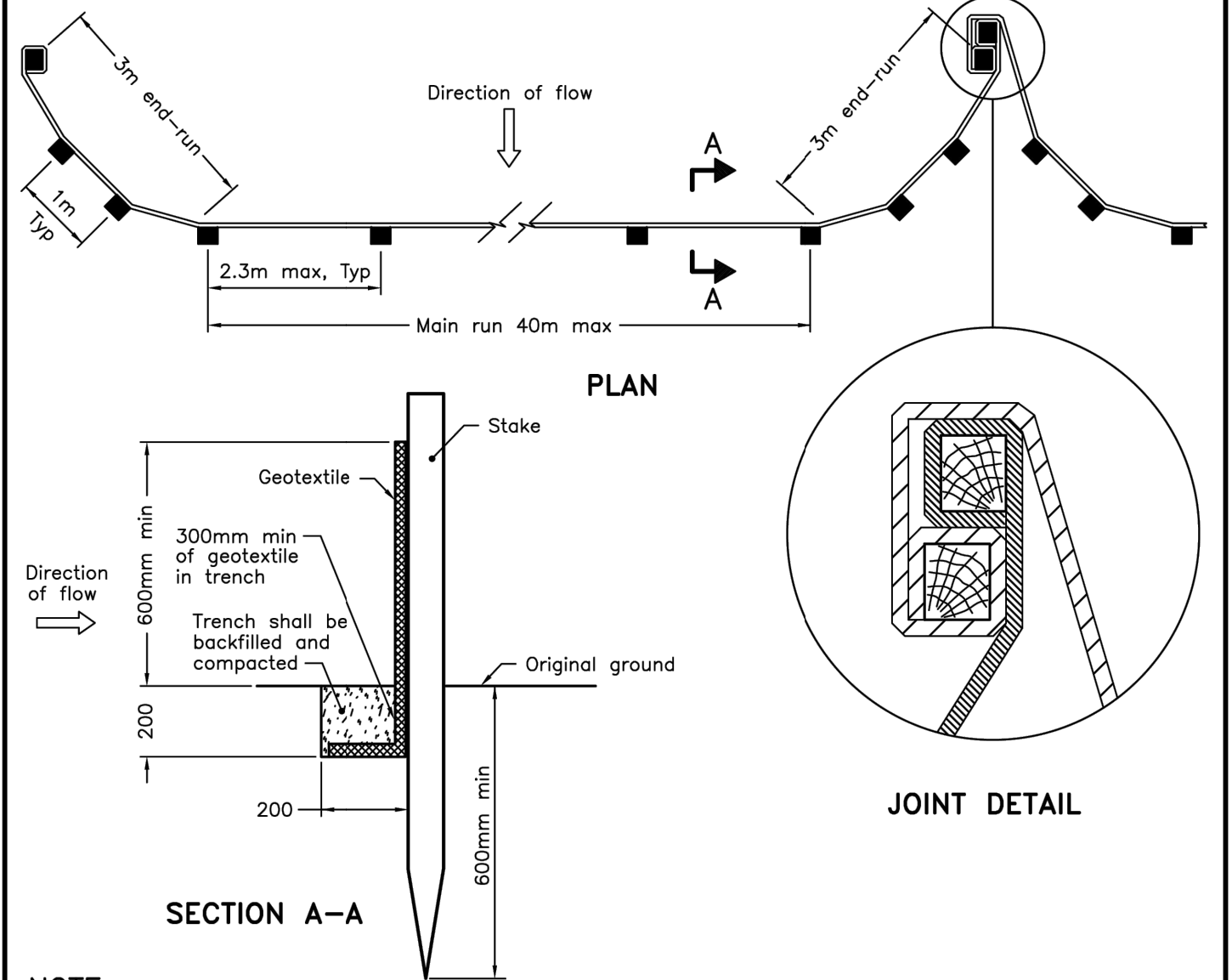
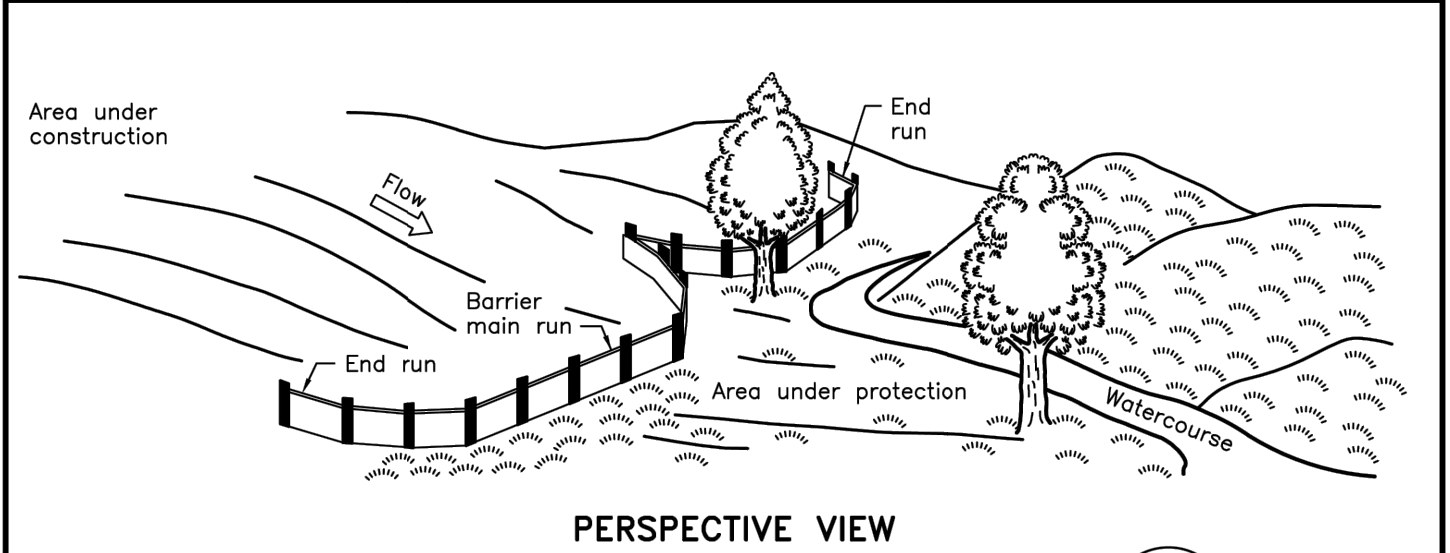
ONTARIO PROVINCIAL STANDARD DRAWING
Nov 2022 Rev 3
TURBIDITY CURTAIN
OPSD 219.260



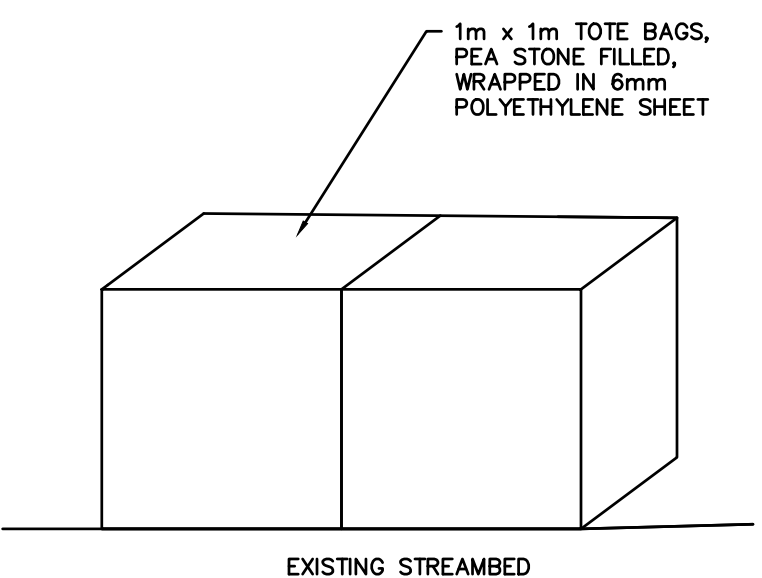
01 SCALE: NTS
TYP. CULVERT REMOVAL SEDIMENT & EROSION CONTROL PLAN (WET)



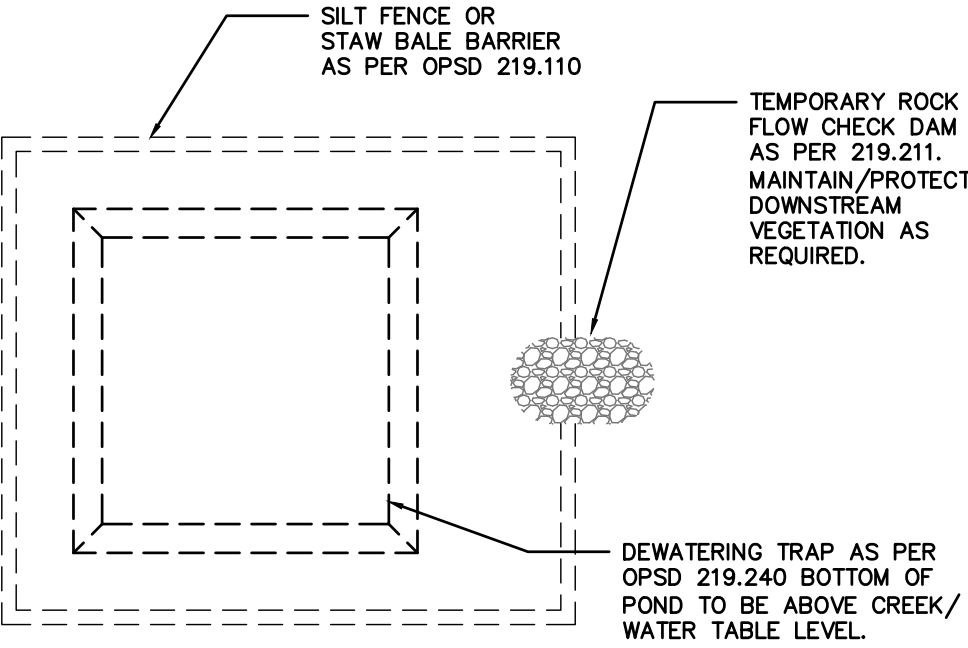
03 SCALE: NTS
CULVERT BLOCKING DETAIL



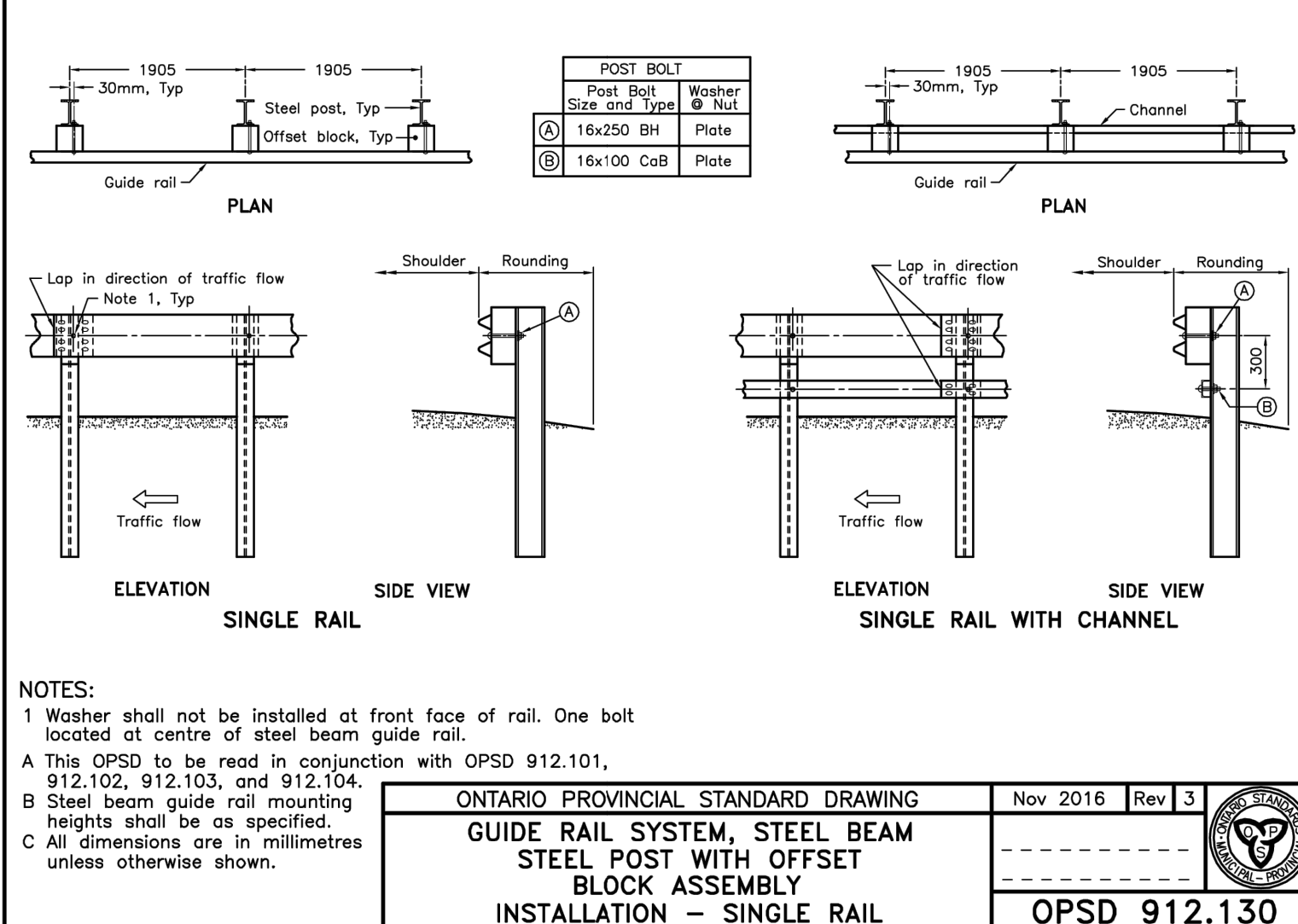
NOTE:
A All dimensions are in millimetres unless otherwise shown.
ONTARIO PROVINCIAL STANDARD DRAWING
Nov 2021 Rev 3
LIGHT-DUTY SILT FENCE BARRIER
OPSD 219.110



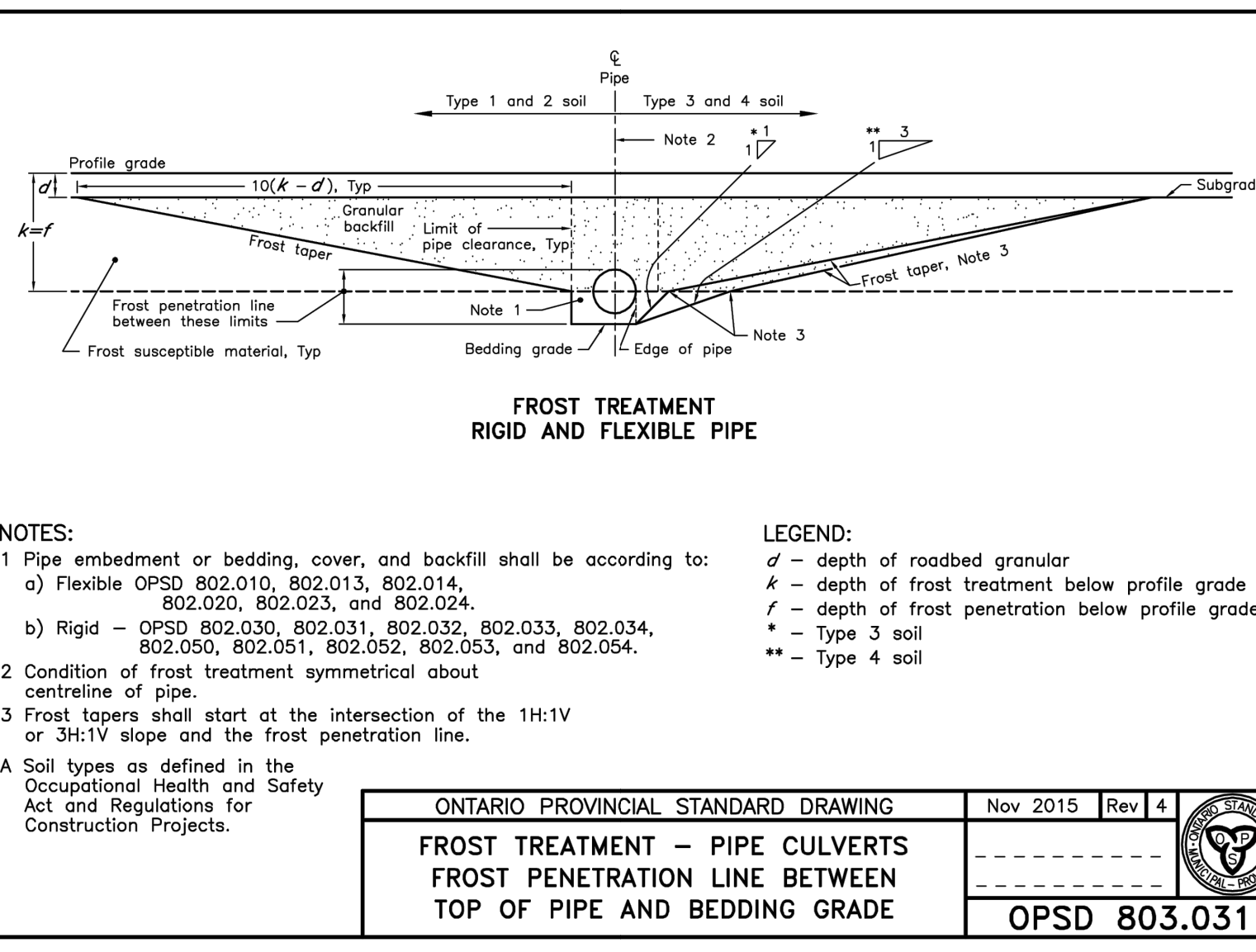
02 SCALE: NTS
TOTE BAG CROSS SECTION



04 SCALE: NTS
SEDIMENT TRAP FOR DEWATERING



NOTES:
1 Washer shall not be installed at front face of rail. One bolt located at centre of steel beam guide rail.
A This OPSD to be read in conjunction with OPSD 912.101, 912.102, 912.103, and 912.104.
B Steel beam guide rail mounting heights shall be as specified.
C All dimensions are in millimetres unless otherwise shown.
ONTARIO PROVINCIAL STANDARD DRAWING
Nov 2016 Rev 3
GUIDE RAIL SYSTEM, STEEL BEAM BLOCK ASSEMBLY INSTALLATION - SINGLE RAIL
OPSD 912.130



NOTES:
1 Pipe embedment or bedding, cover, and backfill shall be according to:
a) Flexible OPSD 802.010, 802.013, 802.014, 802.020, 802.023, and 802.024.
b) Rigid - OPSD 802.030, 802.031, 802.032, 802.033, 802.034, 802.050, 802.051, 802.052, 802.053, and 802.054.
2 Condition of frost treatment symmetrical about centreline of pipe.
3 Frost tapers shall start at the intersection of the 1H:1V or 3H:1V slope and the frost penetration line.
A Soil types as defined in the Occupational Health and Safety Act and Regulations for Construction Projects.
LEGEND:
d - depth of roadbed granular
k - depth of frost treatment below profile grade
f - depth of frost penetration below profile grade
* - Type 3 soil
** - Type 4 soil
ONTARIO PROVINCIAL STANDARD DRAWING
Nov 2015 Rev 4
FROST TREATMENT - PIPE CULVERTS FROST PENETRATION LINE BETWEEN TOP OF PIPE AND BEDDING GRADE
OPSD 803.031

THE GREER GALLOWAY GROUP INC.
CONSULTING ENGINEERS
PETERBOROUGH
BELLEVILLE
KINGSTON
640 CATARAQUI WOODS DRIVE #2A
KINGSTON, ONTARIO, K7P 2Y5
PHONE: 613-536-5420
FAX: 613-548-3793

- NOTES:
1. ALL WORK SHALL BE IN ACCORDANCE WITH RELEVANT CODES AND GUIDELINES.
2. ALL DRAWINGS AND ADDENDA ARE TO BE READ AS, AND IN CONJUNCTION WITH THE SPECIFICATIONS.
3. ALL EQUIPMENT SHALL BE INSTALLED AS SPECIFIED OR APPROVED EQUIVALENT.
4. CONTRACTOR MUST CHECK AND VERIFY ALL DIMENSIONS BEFORE PROCEEDING WITH WORK AND BE RESPONSIBLE FOR SAME.
5. CONTRACTOR MUST REPORT ANY DISCREPANCIES TO ENGINEER FOR RESOLUTION BEFORE COMMENCING THE WORK.
6. ANY CHANGES MUST BE APPROVED BY THE ENGINEER.

LEGEND	
A	A DETAIL NO.
B	B DRAWING NO. - WHERE DETAILED
NORTH	
STAMP	
APR. 21/21	
PROJECT	
JORDAN ROAD CULVERT REPLACEMENT	
EDWARDSBURGH CARDINAL, ON	
DRAWING TITLE	
DETAILS	
05	
04	
03	
02	
01	ISSUED FOR 100% REVIEW 17/11/23
REVISION	DATE
DESIGNED BY G. HOEGI	
DRAWN BY S. HIGH	
REVIEWED BY K. HAWLEY	
APPROVED BY K. HAWLEY	
PROJECT DATE 25/09/2023 (DD/MM/YYYY)	
PROJECT # 23-5-5392	SCALE HOR: NTS VER: NTS
DRAWING # D1	