

THE CORPORATION OF THE
TOWNSHIP OF EDWARDSBURGH CARDINAL
BY-LAW NO. 2021-53

"BEING A BY-LAW TO AMEND ZONING BY-LAW NO. 2012-35, AS AMENDED"

**Dobbie Farms Inc, 1013 County Road 21
Part Lot 9, East Half of Lot 10, Concession 6**

WHEREAS By-law No. 2012-35 as amended regulates the use of land and the use and erection of buildings and structures within the Township of Edwardsburgh Cardinal;

AND WHEREAS the Council of the Corporation of the Township of Edwardsburgh Cardinal deems it advisable to amend By-law No. 2012-35 as hereinafter set forth;

NOW THEREFORE the Council of the Corporation of the Township of Edwardsburgh Cardinal enacts as follows:

1. The lands affected by this By-law are shown as shaded and outlined by heavy black lines on Schedule "A" which is attached hereto and forms part of this By-law.
2. Zoning By-law No. 2012-35, as amended, is hereby further amended by adding the following new subsection at the end of Section 10.2 (d) (Exception Zones):

[xii] A-12, Part Lot 9, East Half of Lot 10, Concession 6

following **Despite provisions to the contrary, on lands zoned A-12, the uses shall not be permitted:**

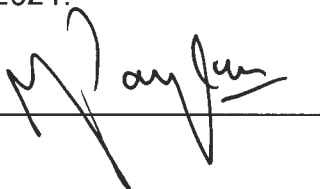
**Dwelling, Accessory,
Dwelling, Single Detached**

3. Schedule "A" to Zoning By-law No. 2012-35, as amended, is hereby further amended by changing the zoning of the lands affected by this By-law from "A" to "A-12".
4. The By-law shall become effective on the date of passing hereof, subject to the provisions of Section 34 (21) of the *Planning Act*, R.S.O. 1990, as amended.

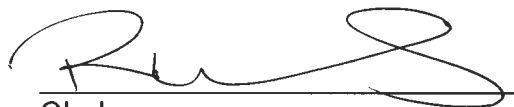
Read a first and second time this in open Council this 23 day of August, 2021.

Read a third and final time, passed, signed and sealed in open Council this 23 day of August, 2021.

Mayor



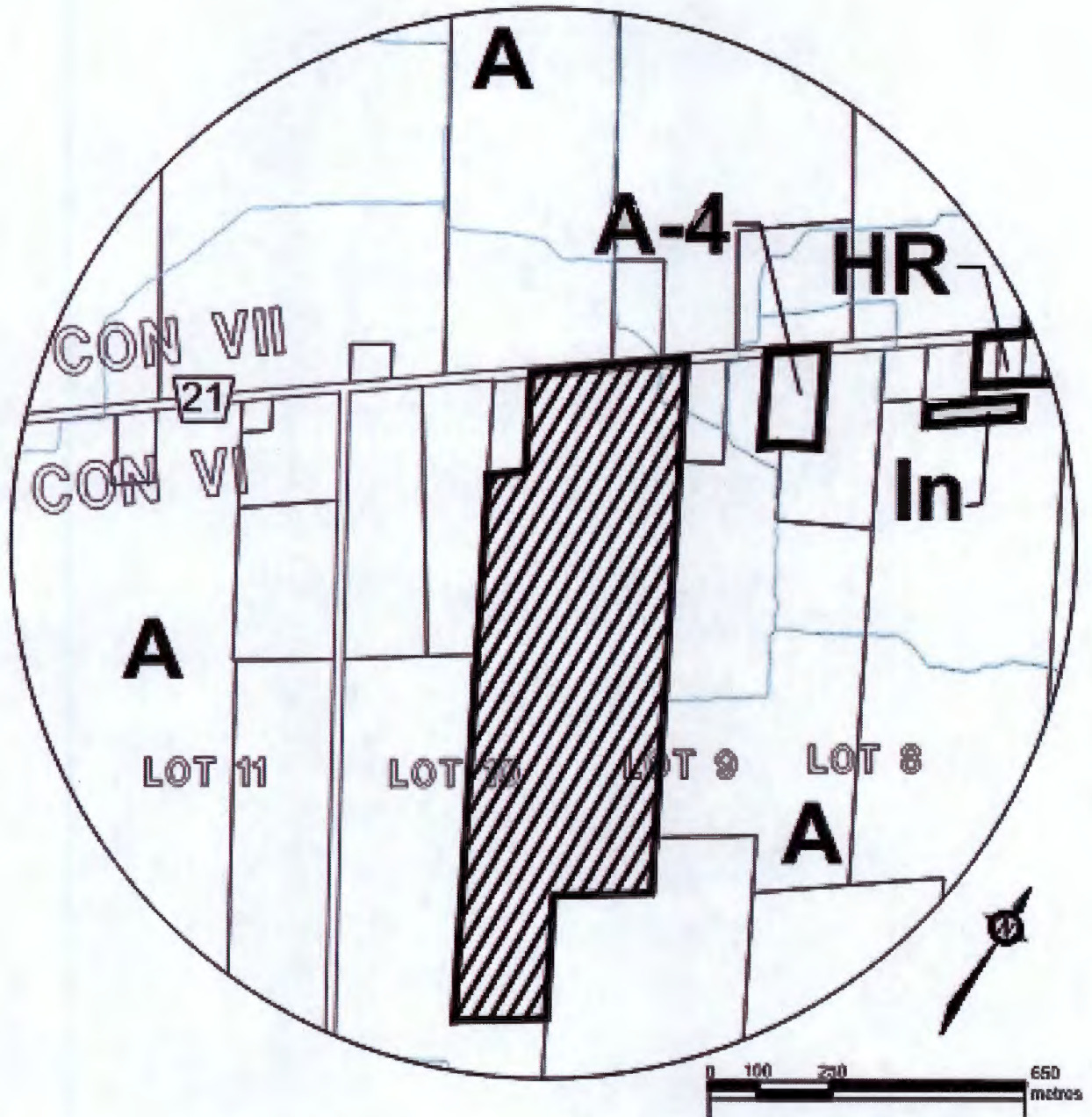
Clerk



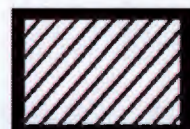
Schedule "A" to By-law No. 2021-53

TOWNSHIP OF EDWARDSBURGH CARDINAL

Part Lot 9, East Half of Lot 10, Concession 6



AREA(S) SUBJECT TO THIS BY-LAW



TO: AGRICULTURAL SPECIAL
EXCEPTION 12 (A-12) ZONE
FROM: AGRICULTURAL (A) ZONE
